

**#PedsCards  
Against  
Humanity.**

**#PedsCards  
Against  
Humanity.**

**#PedsCards  
Against  
Humanity.**

**#PedsCards  
Against  
Humanity.**

# Instructions

Print out in colour on double-sided A4 paper (or card if you're feeling rich).

Divide players into two teams – “cardiologists” and “surgeons”.

Cardiologists are given a **diagram of a lesion**, and need to match it to the correct **diagnosis**. Some diagrams might need you to play a **dextrocardia** or **situs inversus** card!

Surgeons then offer an appropriate **surgical procedure**, then match that to the **diagram of the procedure**.

- Note: there may be more than one appropriate surgical option, or a series of procedures.

# Lesions cheat sheet

- |                          |                                       |
|--------------------------|---------------------------------------|
| 1. ALCAPA                | 21. TGA                               |
| 2. Aortic stenosis       | 22. TGA VSD                           |
| 3. AP window             | 23. Tricuspid atresia                 |
| 4. ASD                   | 24. Truncus type 1                    |
| 5. AVSD                  | 25. Truncus type 2                    |
| 6. ccTGA                 | 26. VSD                               |
| 7. ccTGA VSD             | 27. Normal heart                      |
| 8. Coarctation           | 28. Dextrocardia VSD                  |
| 9. DORV                  | 29. Dextrocardia TGA                  |
| 10. DORV TGA             | 30. Dextrocardia ccTGA                |
| 11. Ebstein's            | 31. Situs inversus TGA                |
| 12. HLHS                 | 32. Situs inversus ccTGA              |
| 13. Interrupted arch     | 33. Situs inversus dextrocardia       |
| 14. PDA                  | 34. Situs inversus dextrocardia VSD   |
| 15. Pulmonary atresia    | 35. Situs inversus dextrocardia TGA   |
| 16. Pulmonary stenosis   | 36. Situs inversus dextrocardia ccTGA |
| 17. TAPVR – supracardiac |                                       |
| 18. TAPVR – intracardiac |                                       |
| 19. TAPVR – infracardiac |                                       |
| 20. TOF                  |                                       |

# Surgery cheat sheet

- |  |                             |
|--|-----------------------------|
| 1. CABG                                  | 16. Fontan                  |
| 2. Ross                                  | 17. Interrupted arch repair |
| 3. AP window repair                      | 18. PDA ligation            |
| 4. ASD closure                           | 19. Pulmonary valvotomy     |
| 5. AVSD repair                           | 20. TAPVR repair            |
| 6. Double switch                         | 21. TOF repair              |
| 7. Rastelli-Mustard                      | 22. Arterial switch         |
| 8. End-to-end anastomosis                | 23. Switch and VSD closure  |
| 9. Arch augmentation                     | 24. Truncus repair          |
| 10. DORV repair                          | 25. VSD closure             |
| 11. Rastelli and VSD closure             | 26. PA band                 |
| 12. Tricuspid valve repair for Ebstein's |                             |
| 13. Norwood and BT shunt                 |                             |
| 14. Norwood and Sano                     |                             |
| 15. Glenn                                |                             |

# Further info

This game is intended to be a bit of fun, and is obviously not a substitute for clinical experience and training in cardiology and/or cardiothoracic surgery.

I take no responsibility for the accuracy of the material, and definitely no responsibility for any incorrect clinical care given by anyone who uses the cards!

If you have any comments or suggestions, please email me at [ahmed.osman@uhs.nhs.uk](mailto:ahmed.osman@uhs.nhs.uk) or tweet [@medsquire](https://twitter.com/medsquire).

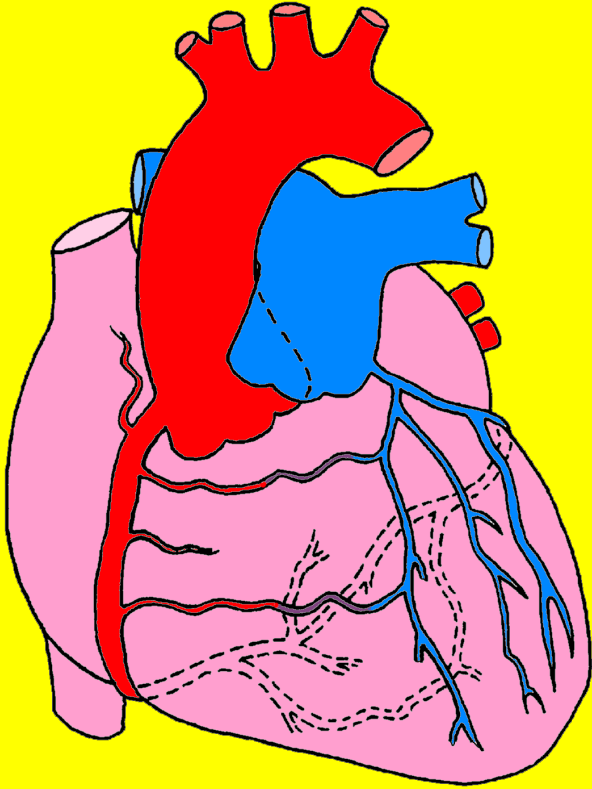
**#PedsCards  
Against  
Humanity.**

**#PedsCards  
Against  
Humanity.**

**#PedsCards  
Against  
Humanity.**

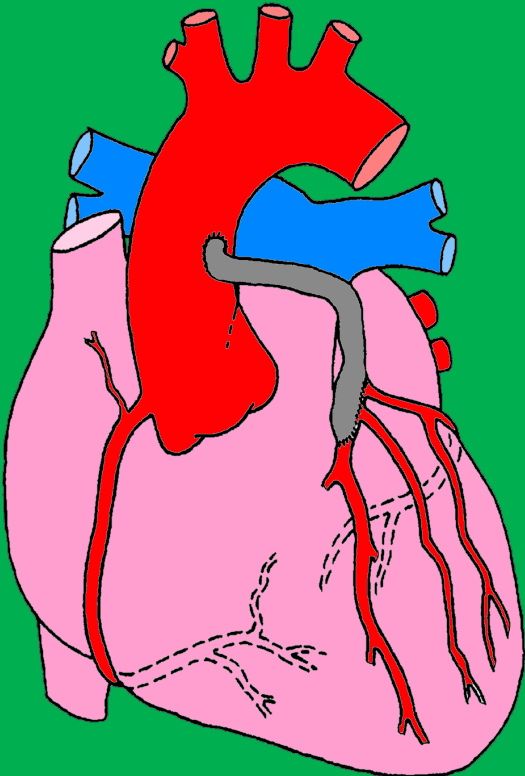
**#PedsCards  
Against  
Humanity.**

1



**Anomalous  
left  
coronary  
artery from  
pulmonary  
artery**

1



**Coronary  
artery  
bypass graft**

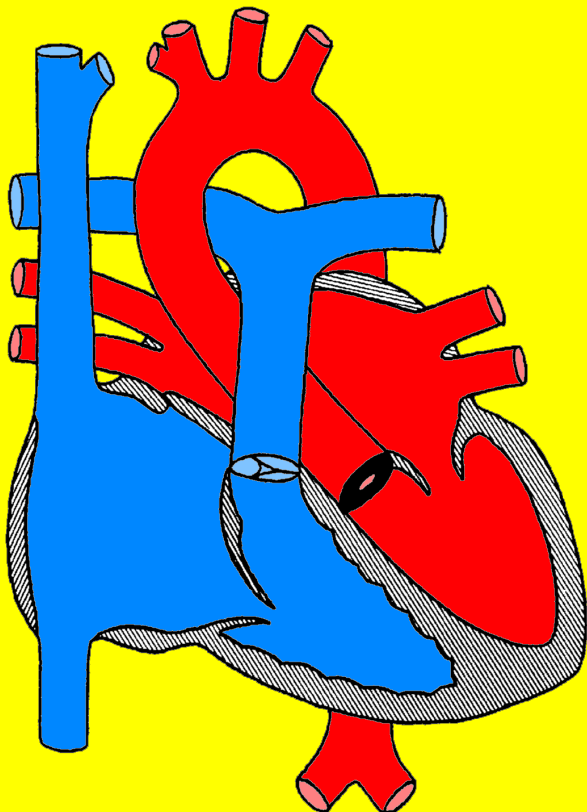
**#PedsCards  
Against  
Humanity.**

**#PedsCards  
Against  
Humanity.**

**#PedsCards  
Against  
Humanity.**

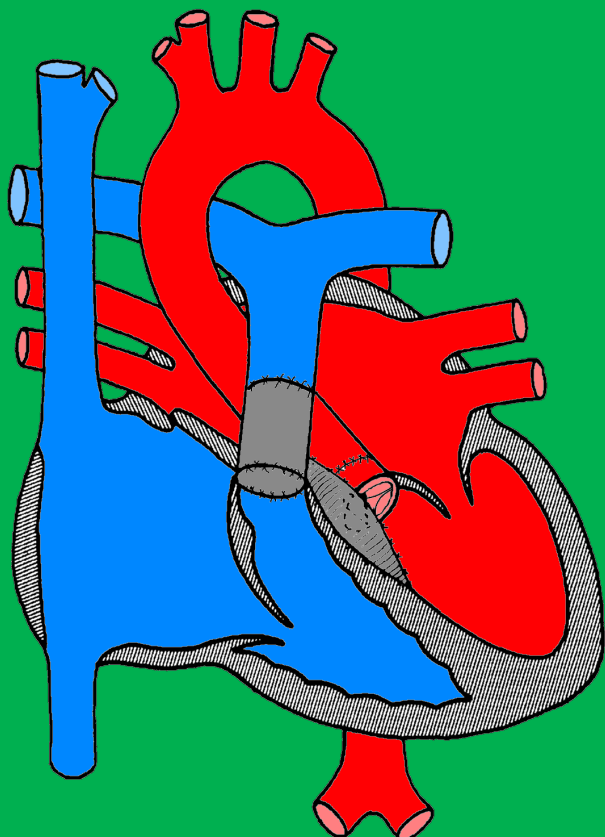
**#PedsCards  
Against  
Humanity.**

2



# Aortic stenosis

2



# Ross procedure

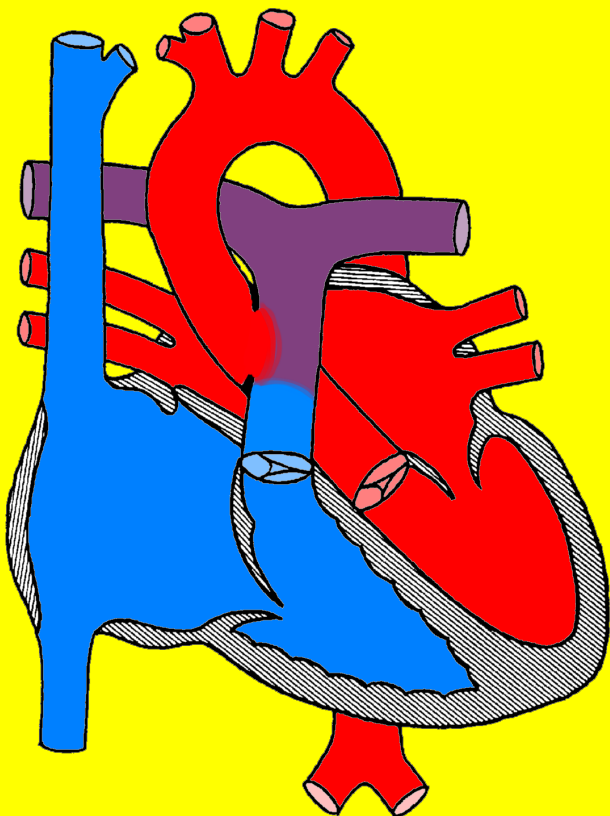
**#PedsCards  
Against  
Humanity.**

**#PedsCards  
Against  
Humanity.**

**#PedsCards  
Against  
Humanity.**

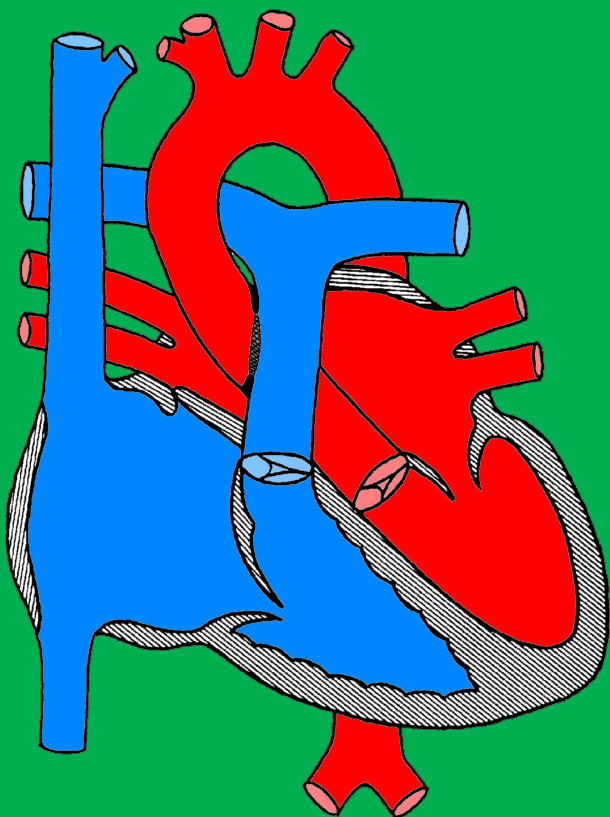
**#PedsCards  
Against  
Humanity.**

3



**Aorto-  
pulmonary  
window**

3



**Patch  
closure**

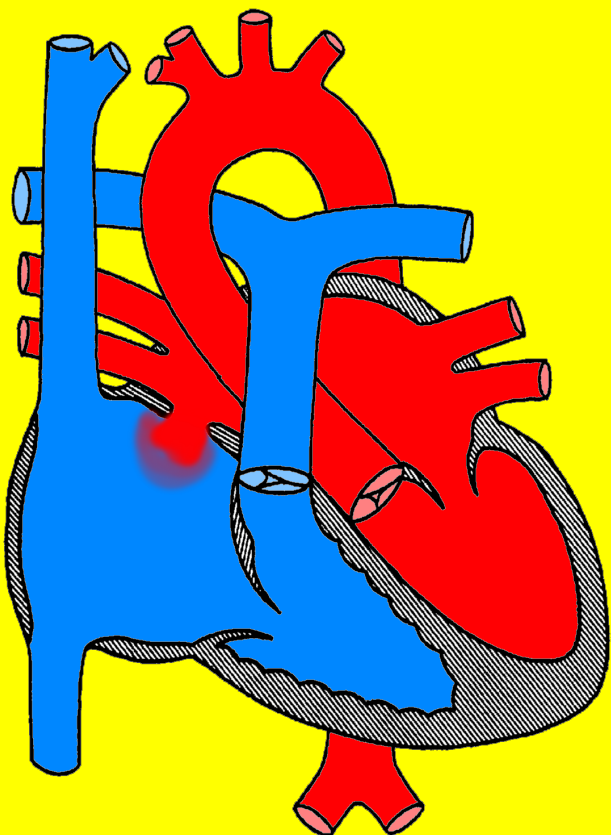
**#PedsCards  
Against  
Humanity.**

**#PedsCards  
Against  
Humanity.**

**#PedsCards  
Against  
Humanity.**

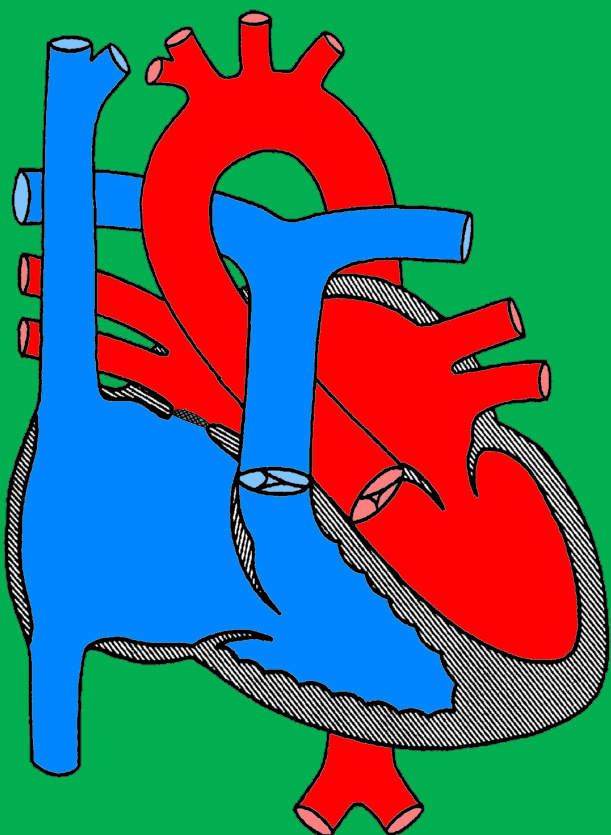
**#PedsCards  
Against  
Humanity.**

4



# Atrial septal defect

4



# Patch closure

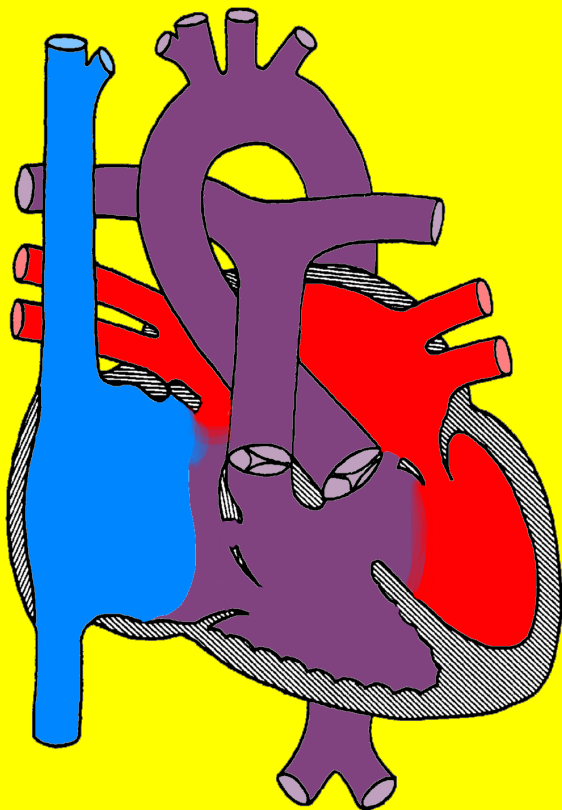
**#PedsCards  
Against  
Humanity.**

**#PedsCards  
Against  
Humanity.**

**#PedsCards  
Against  
Humanity.**

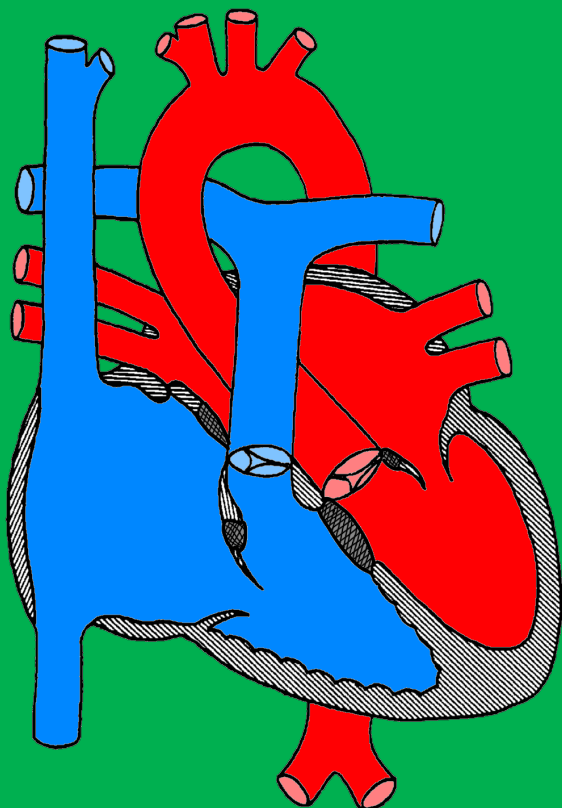
**#PedsCards  
Against  
Humanity.**

5



**Atrio-  
ventricular  
septal  
defect**

5



**Patch  
closure and  
valve repair**

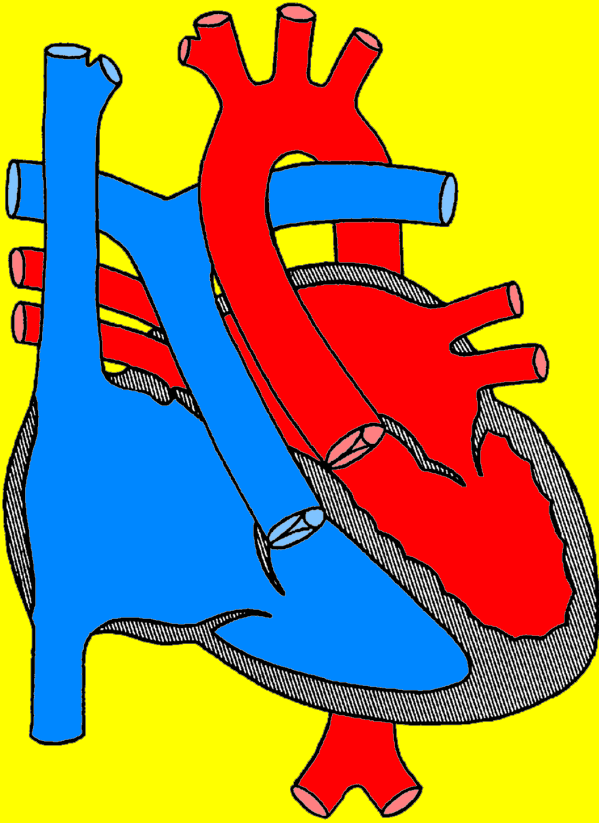
**#PedsCards  
Against  
Humanity.**

**#PedsCards  
Against  
Humanity.**

**#PedsCards  
Against  
Humanity.**

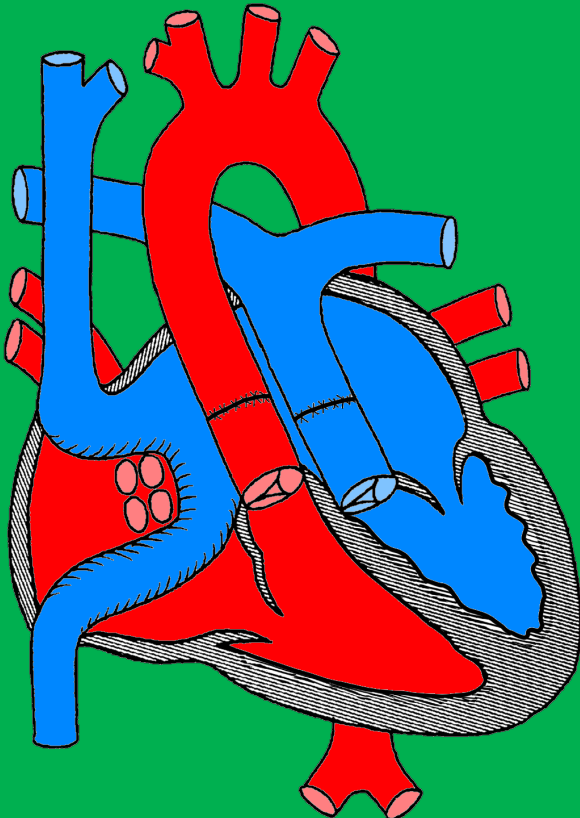
**#PedsCards  
Against  
Humanity.**

6



**Congenitally  
corrected  
transposition  
of the great  
arteries**

6



**Double  
switch  
procedure**

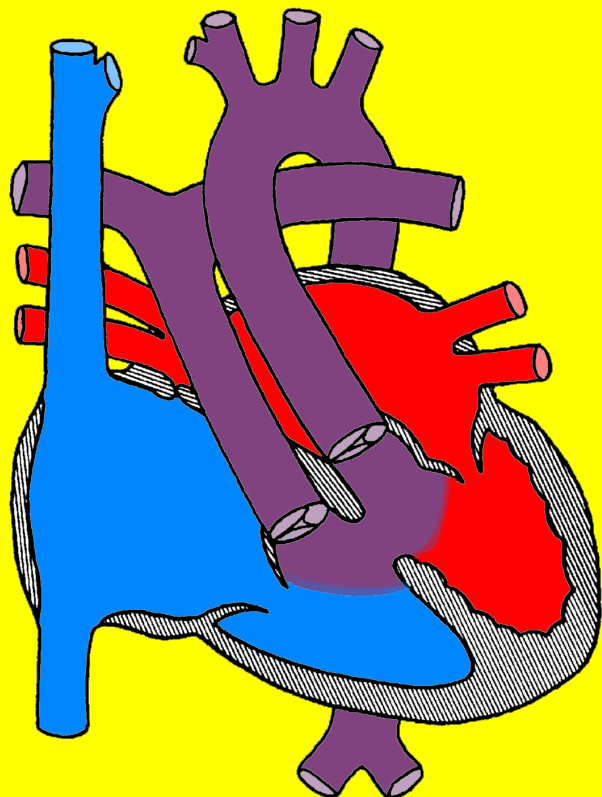
**#PedsCards  
Against  
Humanity.**

**#PedsCards  
Against  
Humanity.**

**#PedsCards  
Against  
Humanity.**

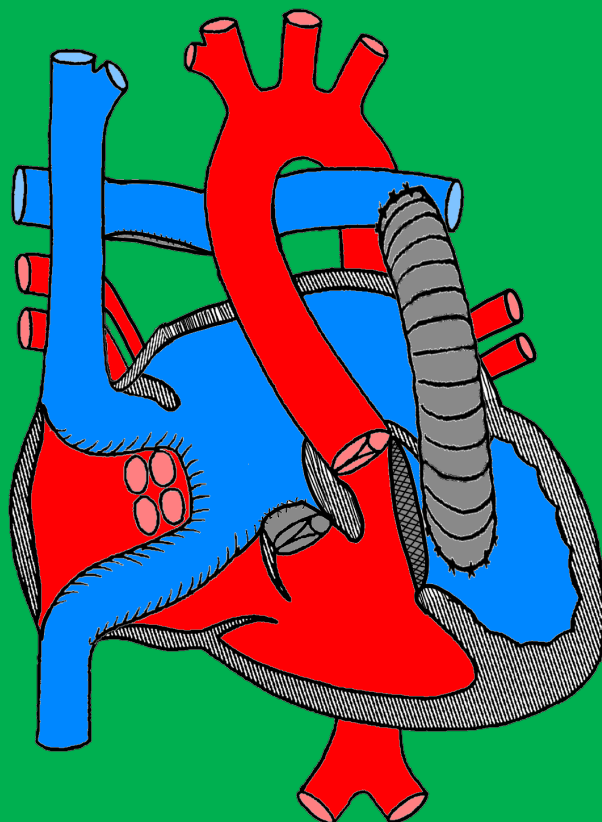
**#PedsCards  
Against  
Humanity.**

7



**Congenitally  
corrected  
transposition  
of the great  
arteries,  
ventricular  
septal defect**

7



**Rastelli –  
Mustard  
procedure**

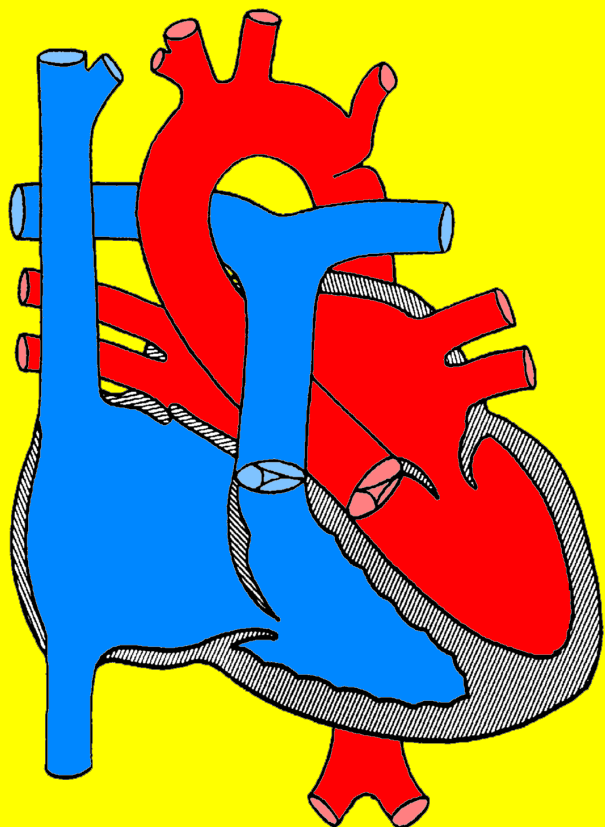
**#PedsCards  
Against  
Humanity.**

**#PedsCards  
Against  
Humanity.**

**#PedsCards  
Against  
Humanity.**

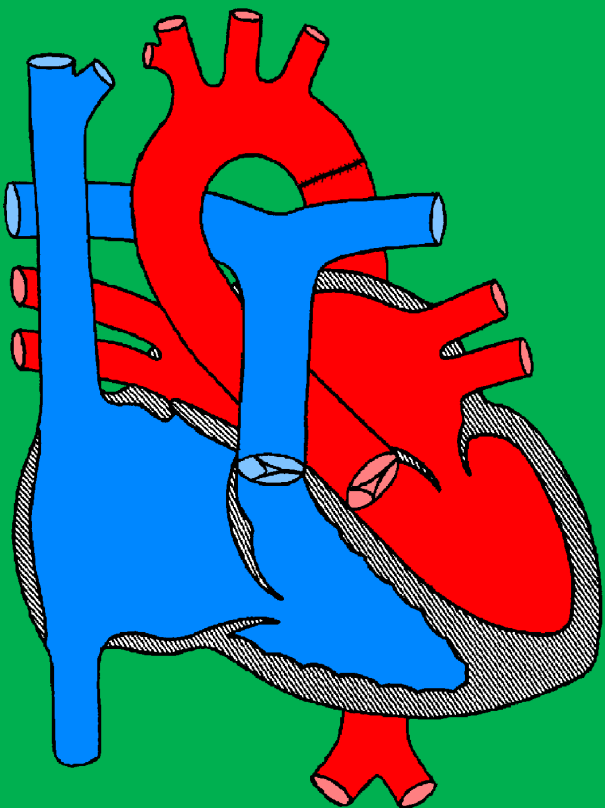
**#PedsCards  
Against  
Humanity.**

8



# Coarctation of the aorta

8



# End-to-end anastomosis

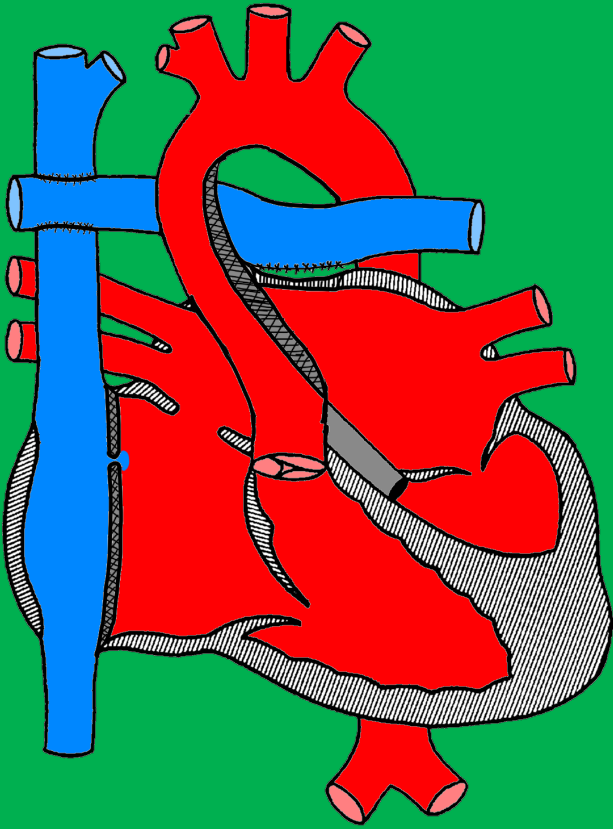
**#PedsCards  
Against  
Humanity.**

**#PedsCards  
Against  
Humanity.**

**#PedsCards  
Against  
Humanity.**

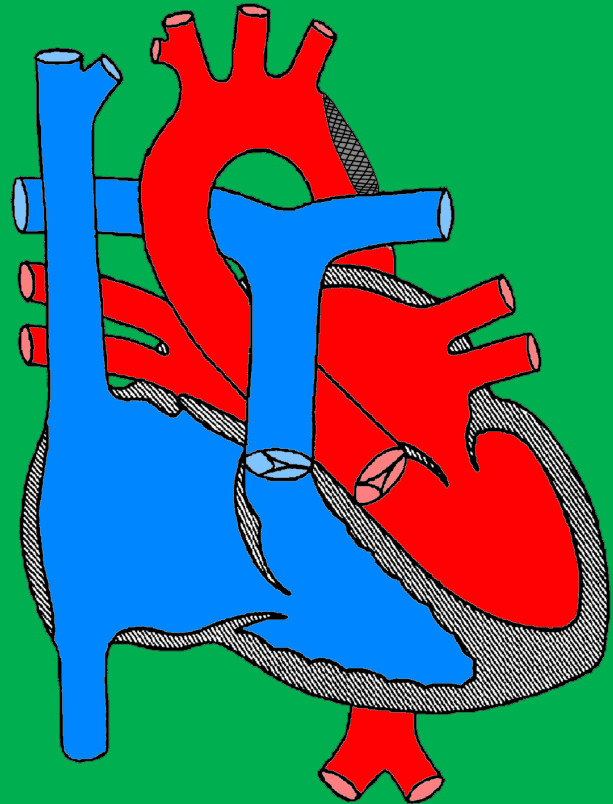
**#PedsCards  
Against  
Humanity.**

16



**Fontan  
completion  
(Total cavo-  
pulmonary  
connection)**

9



**Arch repair  
and  
augmentation**

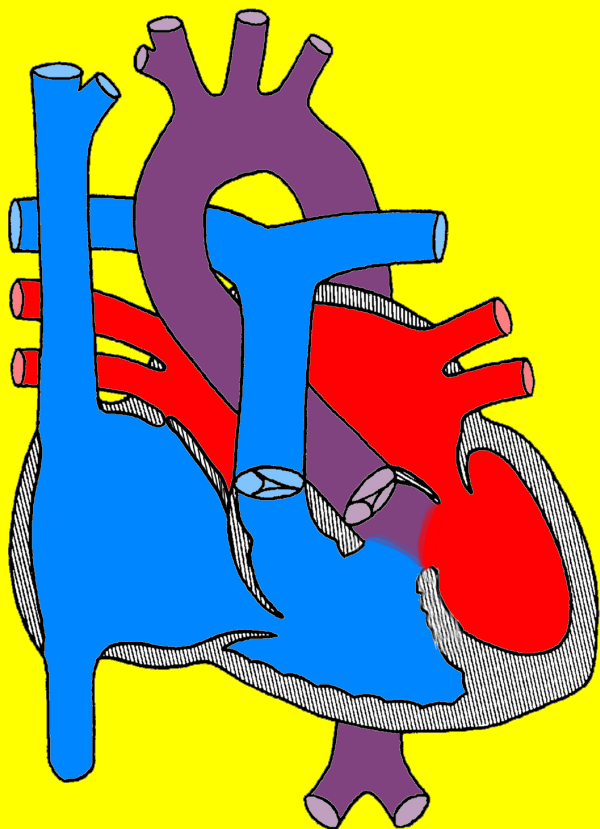
**#PedsCards  
Against  
Humanity.**

**#PedsCards  
Against  
Humanity.**

**#PedsCards  
Against  
Humanity.**

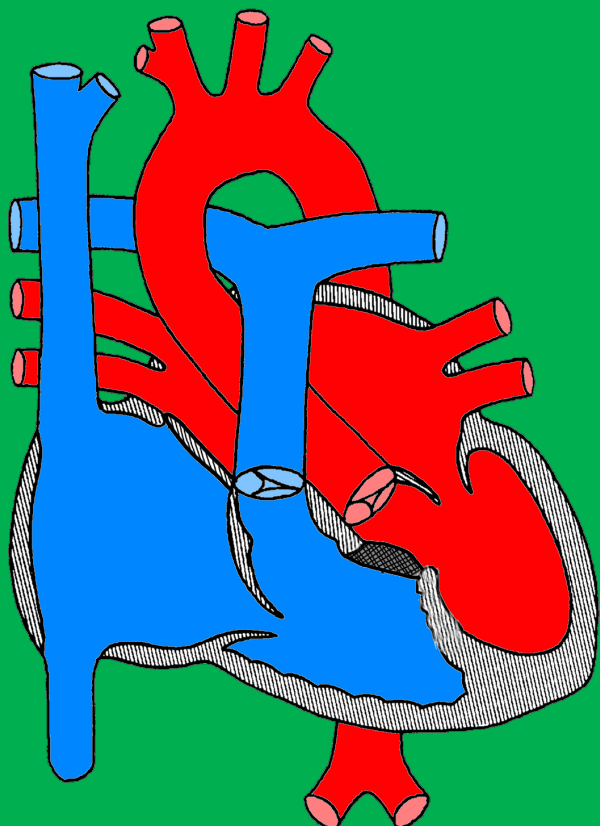
**#PedsCards  
Against  
Humanity.**

9



**Double  
outlet right  
ventricle**

10



**Patch  
closure**

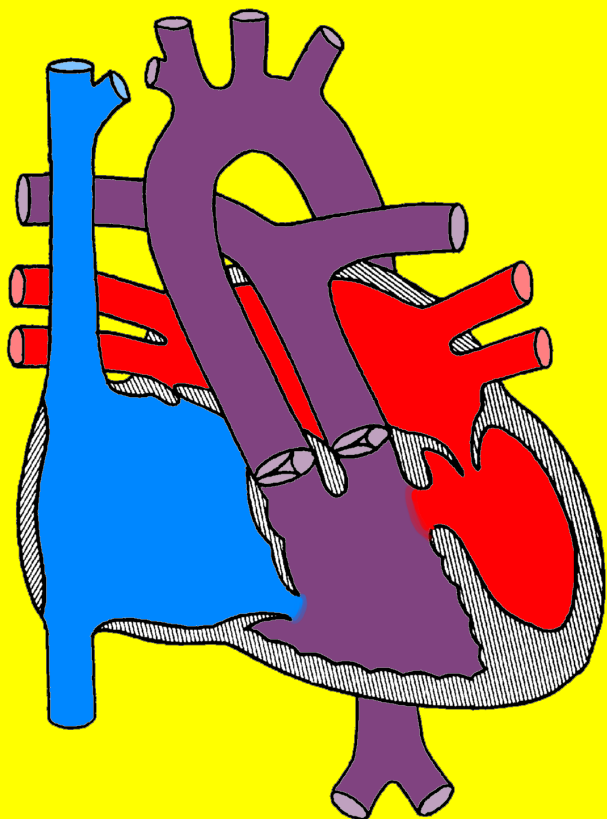
**#PedsCards  
Against  
Humanity.**

**#PedsCards  
Against  
Humanity.**

**#PedsCards  
Against  
Humanity.**

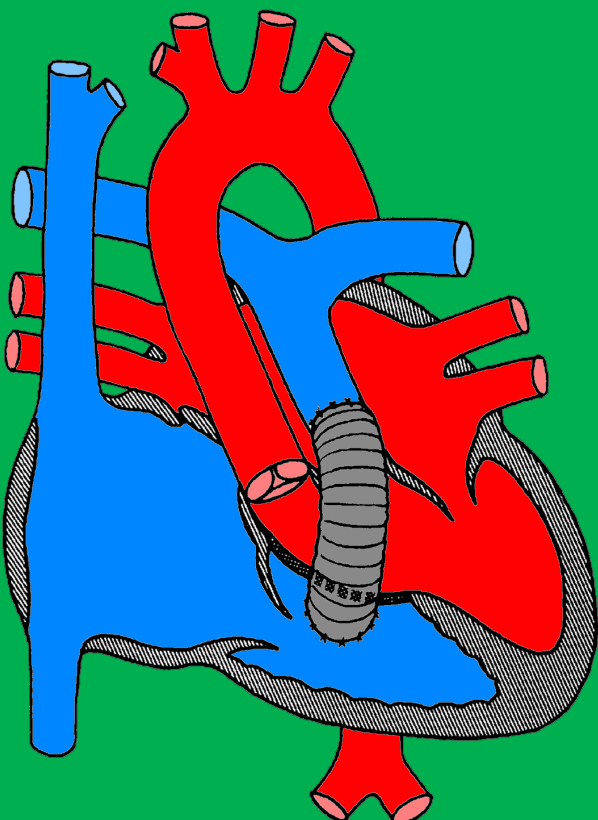
**#PedsCards  
Against  
Humanity.**

10



**Double  
outlet right  
ventricle,  
transposition  
of the great  
arteries**

11



**Patch  
closure,  
right ventricle  
to pulmonary  
artery conduit  
(Rastelli)**

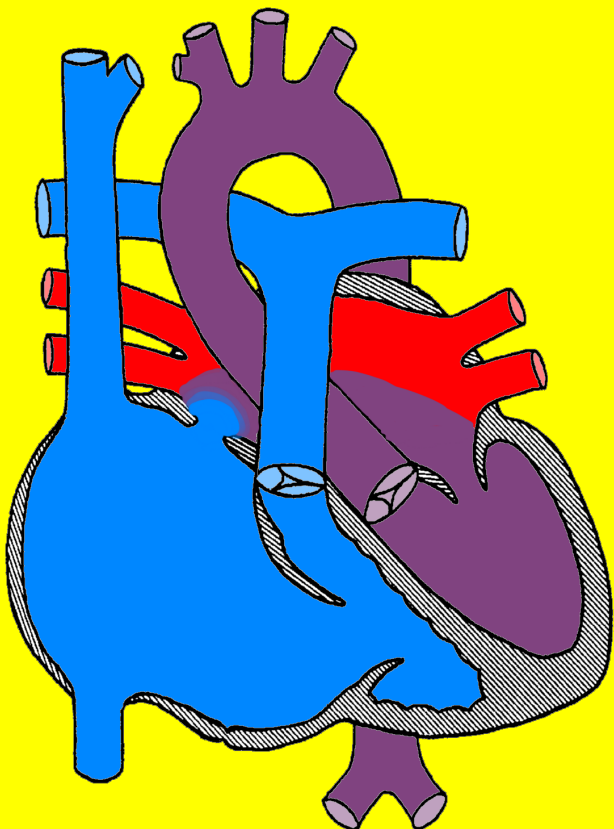
**#PedsCards  
Against  
Humanity.**

**#PedsCards  
Against  
Humanity.**

**#PedsCards  
Against  
Humanity.**

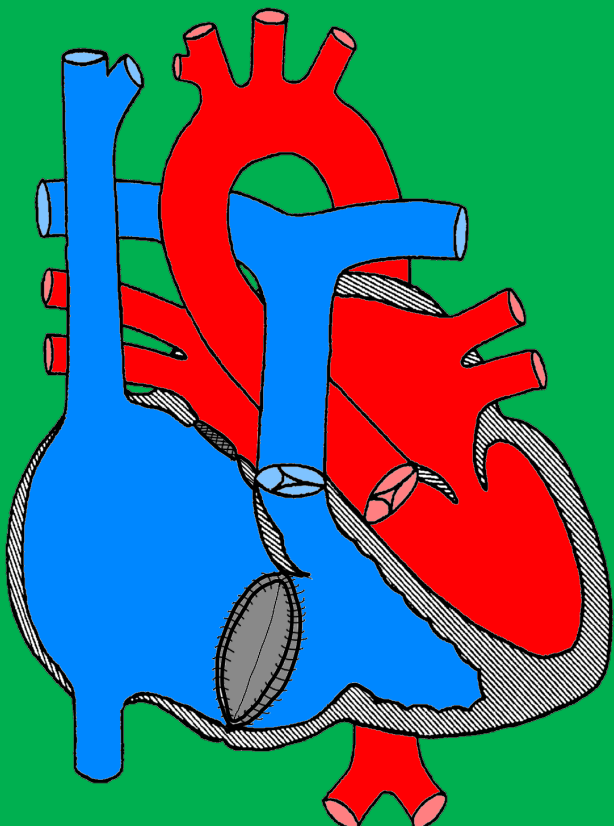
**#PedsCards  
Against  
Humanity.**

11



# Ebstein's anomaly

12



# Tricuspid valve repair

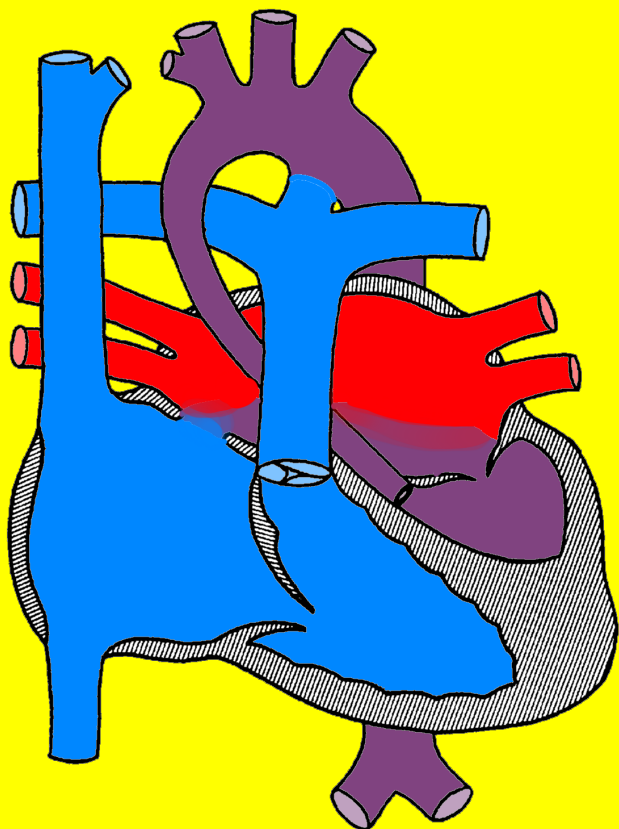
**#PedsCards  
Against  
Humanity.**

**#PedsCards  
Against  
Humanity.**

**#PedsCards  
Against  
Humanity.**

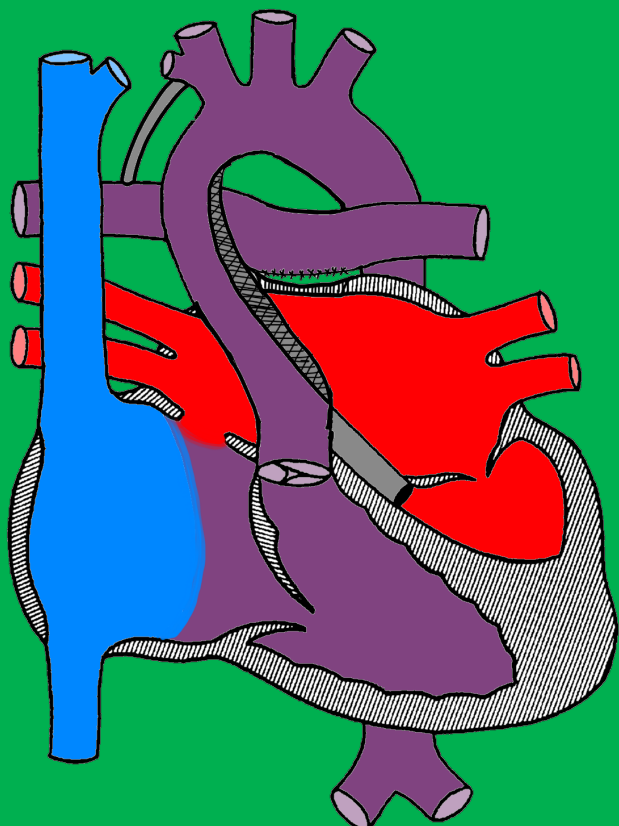
**#PedsCards  
Against  
Humanity.**

12



**Hypoplastic  
left heart  
syndrome**

13



**Norwood  
procedure,  
Blalock –  
Taussig  
shunt**

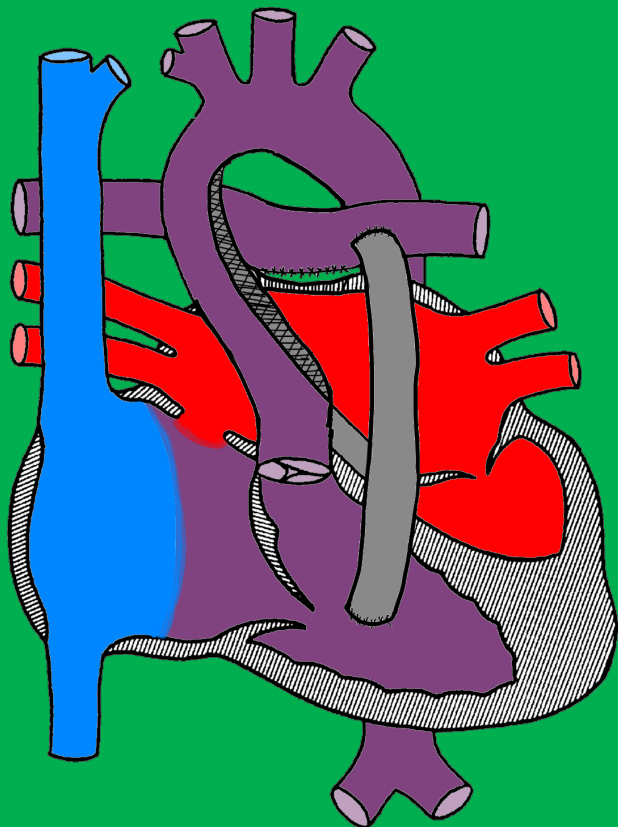
**#PedsCards  
Against  
Humanity.**

**#PedsCards  
Against  
Humanity.**

**#PedsCards  
Against  
Humanity.**

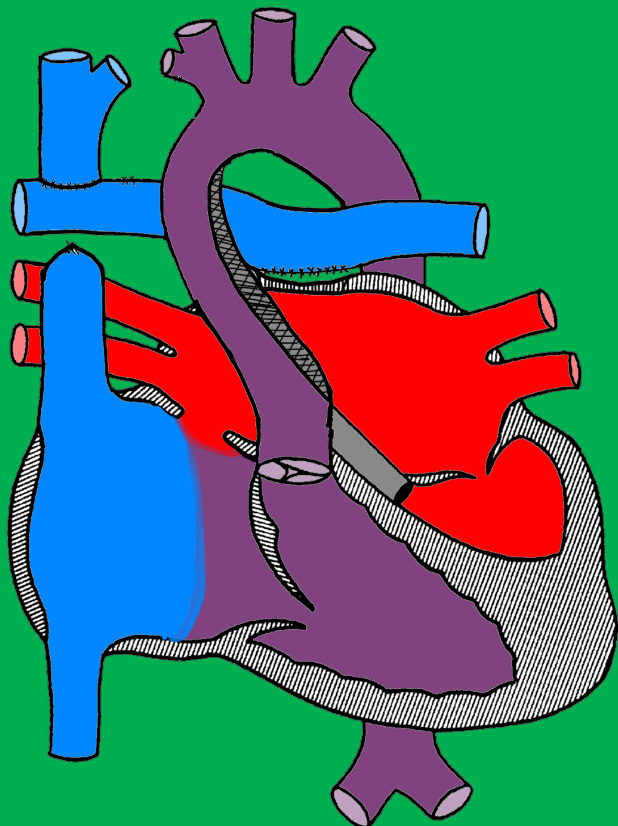
**#PedsCards  
Against  
Humanity.**

14



**Norwood  
procedure,  
Sano shunt**

15



**Bidirectional  
Glenn shunt  
(Bidirectional  
cavo-  
pulmonary  
connection)**

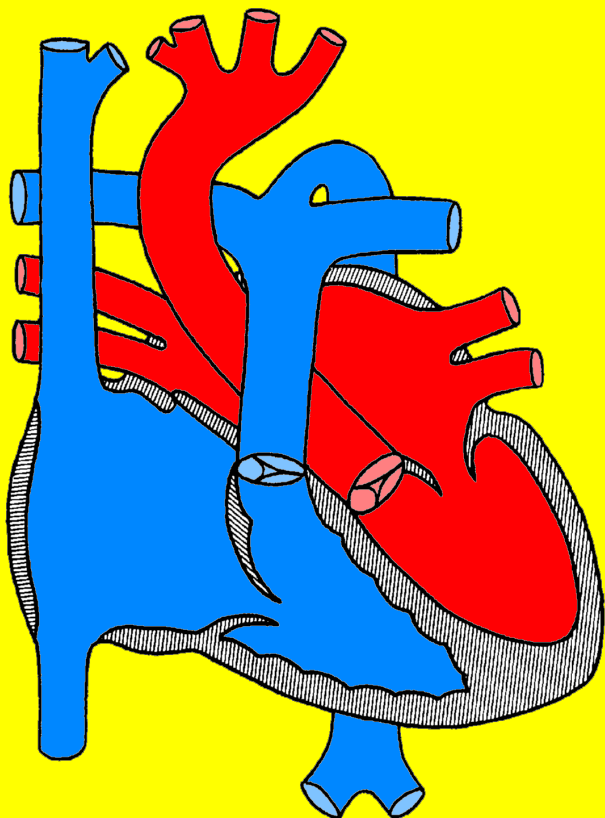
**#PedsCards  
Against  
Humanity.**

**#PedsCards  
Against  
Humanity.**

**#PedsCards  
Against  
Humanity.**

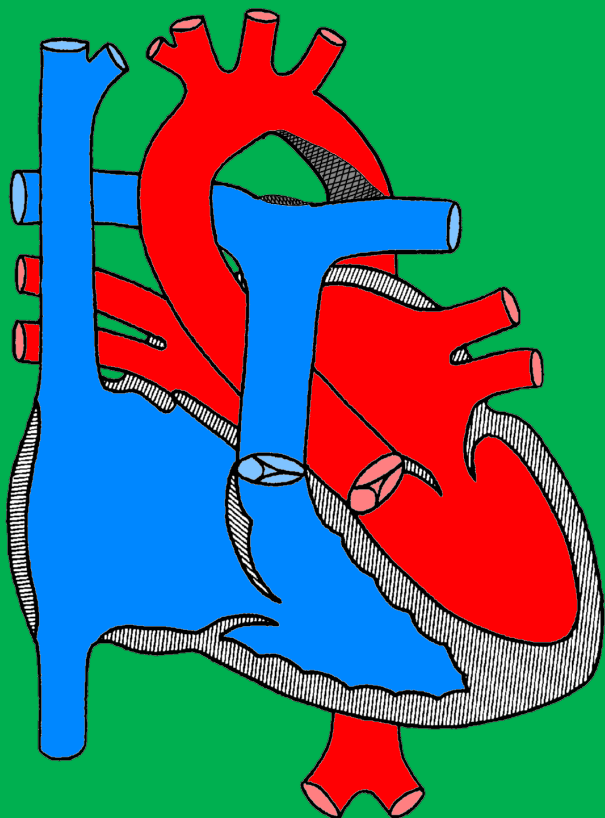
**#PedsCards  
Against  
Humanity.**

13



**Interrupted  
aortic arch**

17



**Patch repair  
and arch  
augmentation**

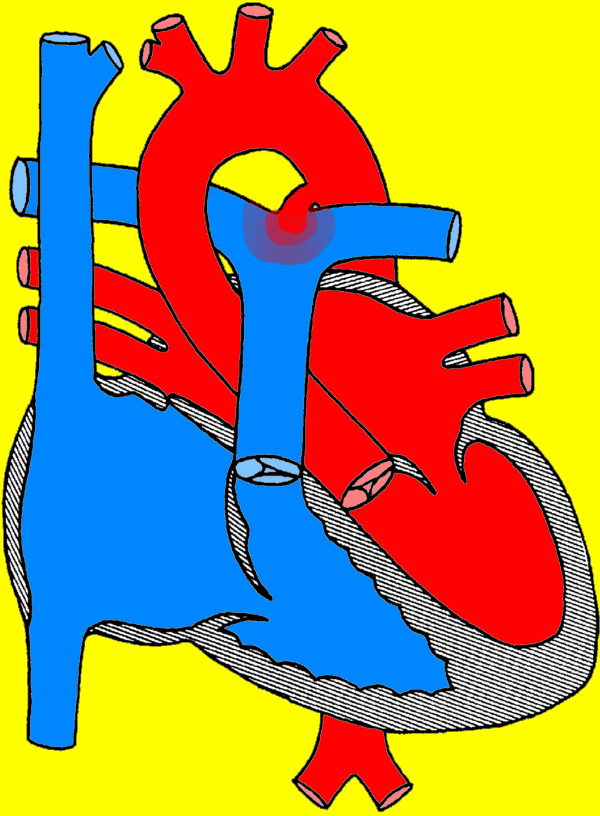
**#PedsCards  
Against  
Humanity.**

**#PedsCards  
Against  
Humanity.**

**#PedsCards  
Against  
Humanity.**

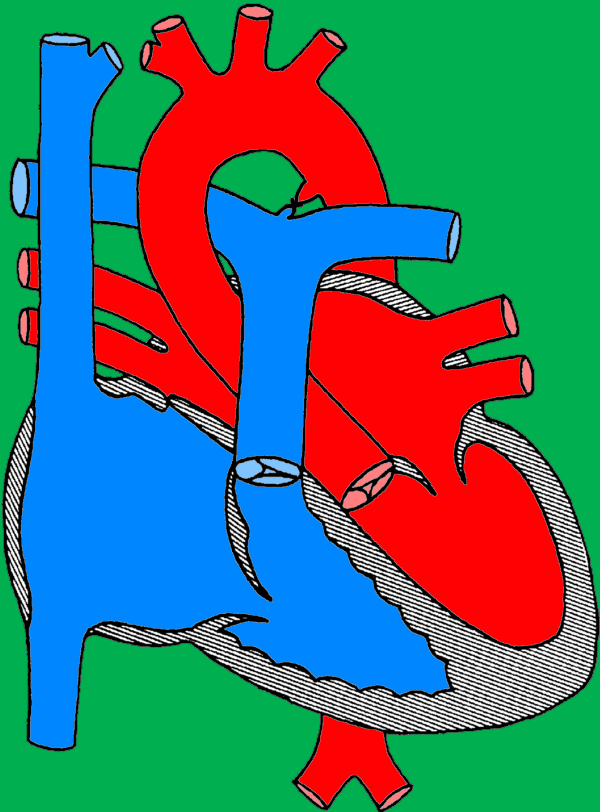
**#PedsCards  
Against  
Humanity.**

14



**Patent  
ductus  
arteriosus**

18



**Ligation**

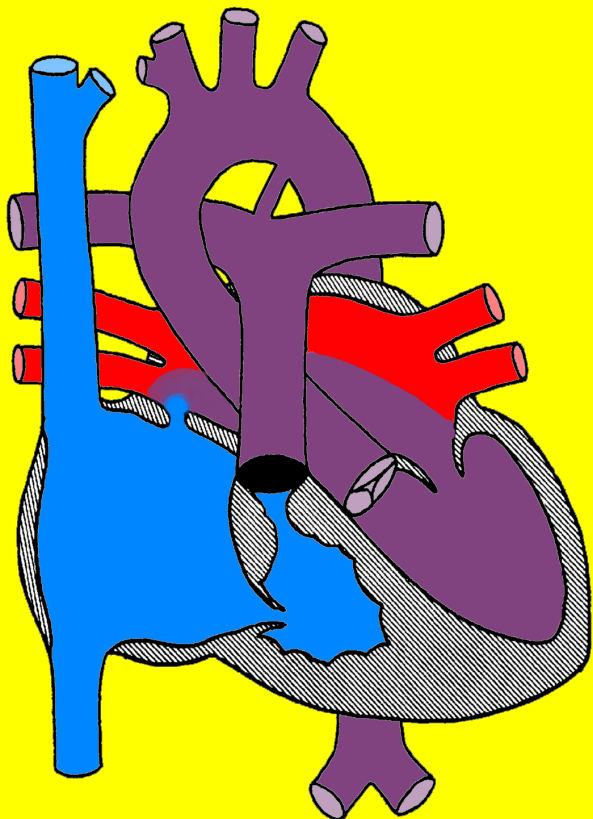
**#PedsCards  
Against  
Humanity.**

**#PedsCards  
Against  
Humanity.**

**#PedsCards  
Against  
Humanity.**

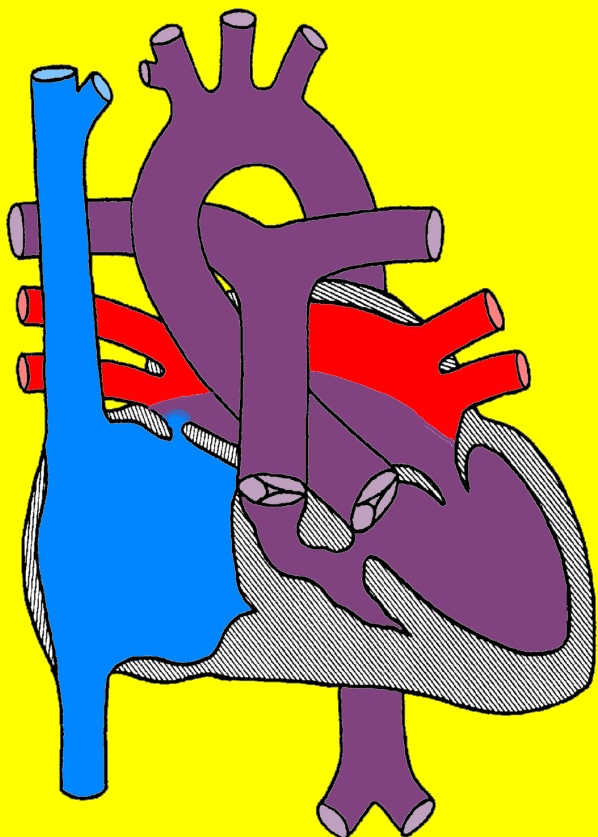
**#PedsCards  
Against  
Humanity.**

15



# Pulmonary atresia

23



# Tricuspid atresia

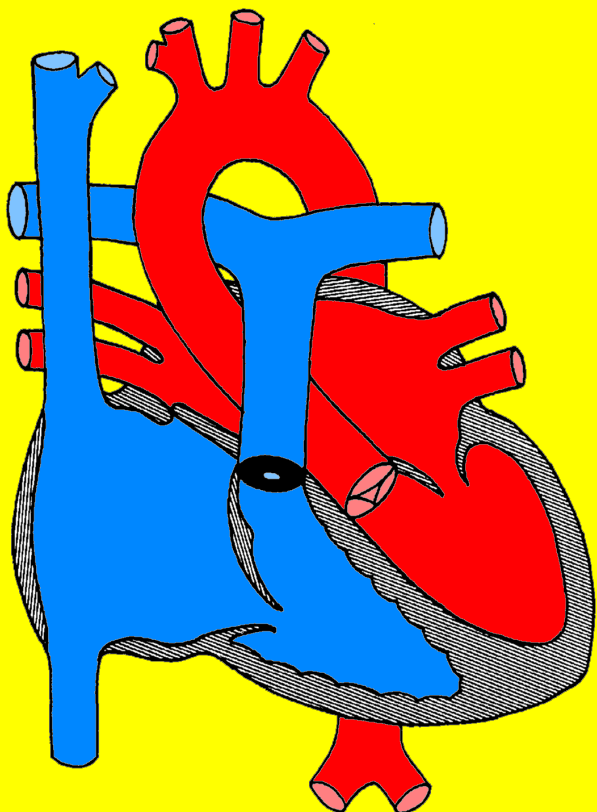
**#PedsCards  
Against  
Humanity.**

**#PedsCards  
Against  
Humanity.**

**#PedsCards  
Against  
Humanity.**

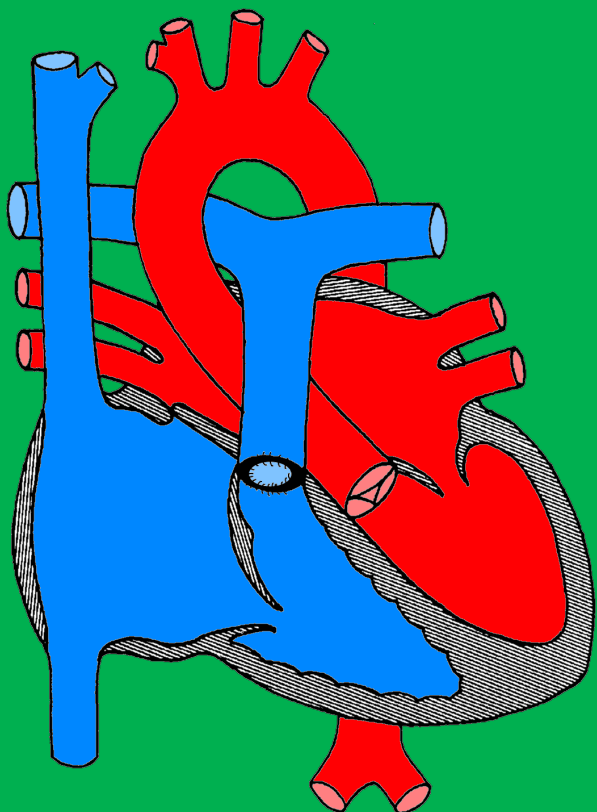
**#PedsCards  
Against  
Humanity.**

16



# Pulmonary stenosis

19



# Valvotomy

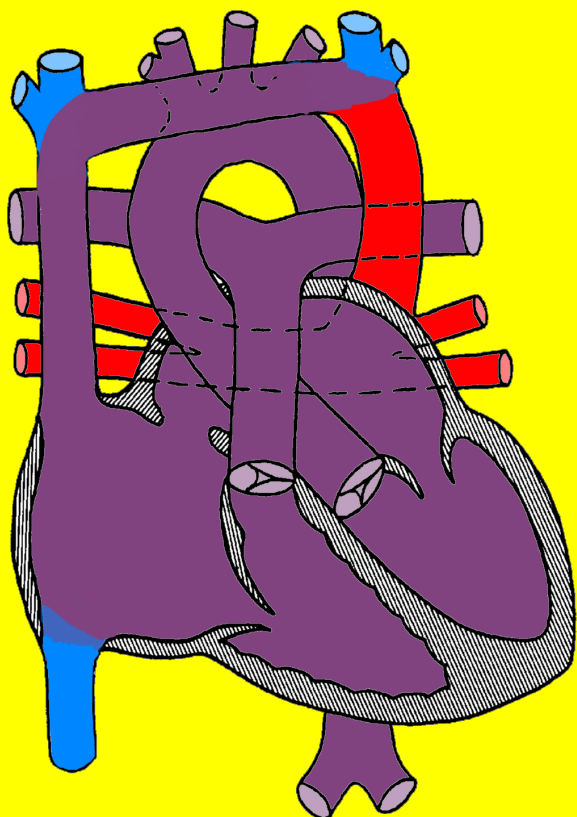
**#PedsCards  
Against  
Humanity.**

**#PedsCards  
Against  
Humanity.**

**#PedsCards  
Against  
Humanity.**

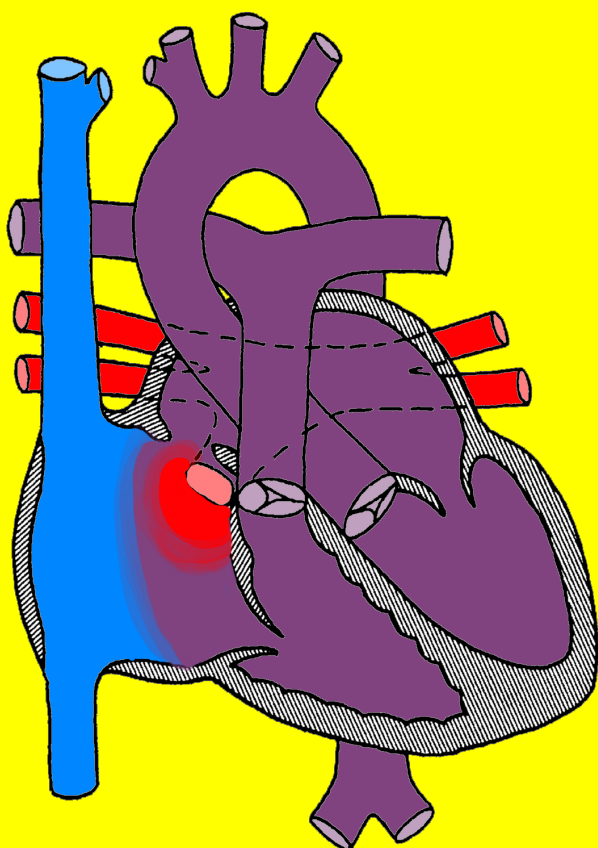
**#PedsCards  
Against  
Humanity.**

17



**Total  
anomalous  
pulmonary  
venous  
return  
(supracardiac)**

18



**Total  
anomalous  
pulmonary  
venous  
return  
(intracardiac)**

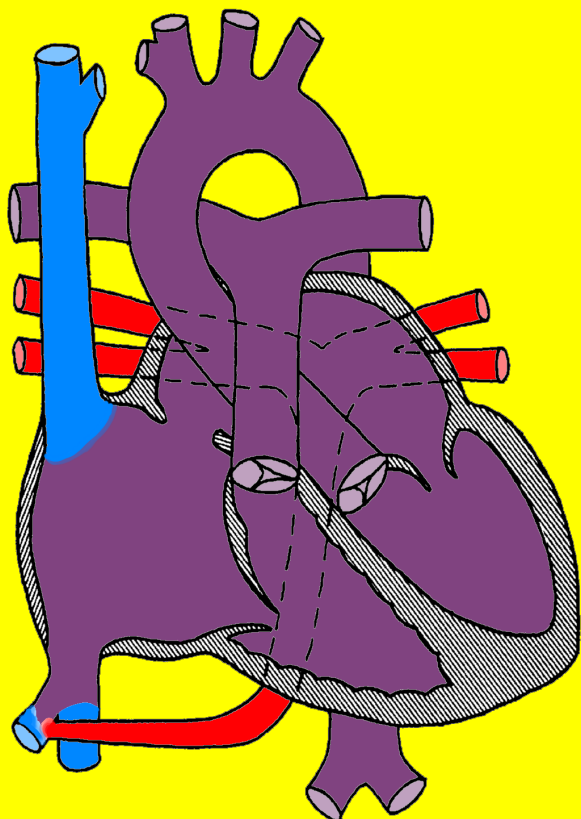
**#PedsCards  
Against  
Humanity.**

**#PedsCards  
Against  
Humanity.**

**#PedsCards  
Against  
Humanity.**

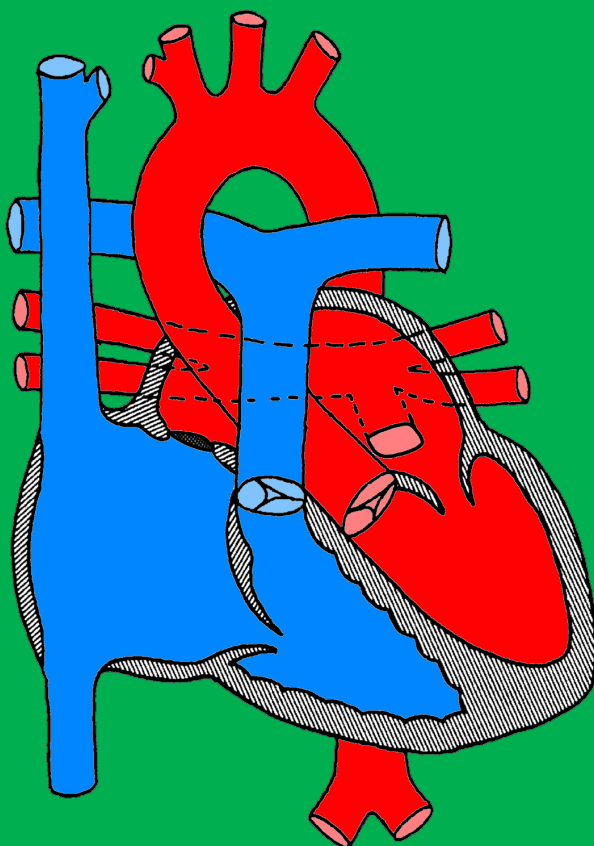
**#PedsCards  
Against  
Humanity.**

19



**Total  
anomalous  
pulmonary  
venous  
return  
(infracardiac)**

20



**Redirection  
of  
pulmonary  
veins**

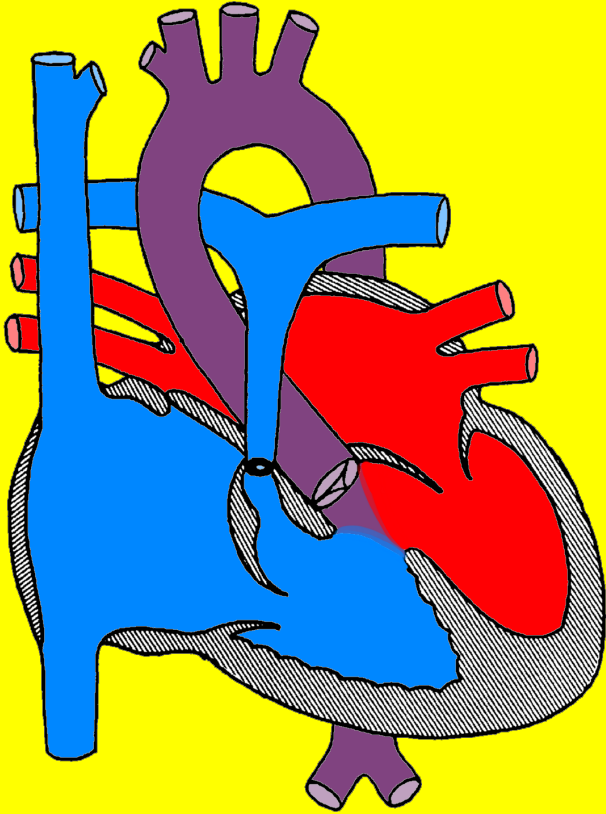
**#PedsCards  
Against  
Humanity.**

**#PedsCards  
Against  
Humanity.**

**#PedsCards  
Against  
Humanity.**

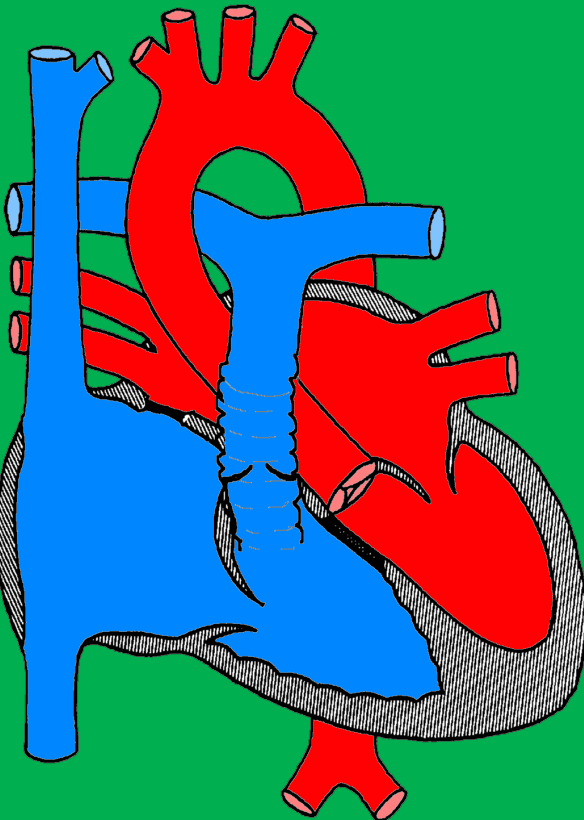
**#PedsCards  
Against  
Humanity.**

20



# Tetralogy of Fallot

21



Patch  
closure,  
relief of  
outflow  
tract  
obstruction

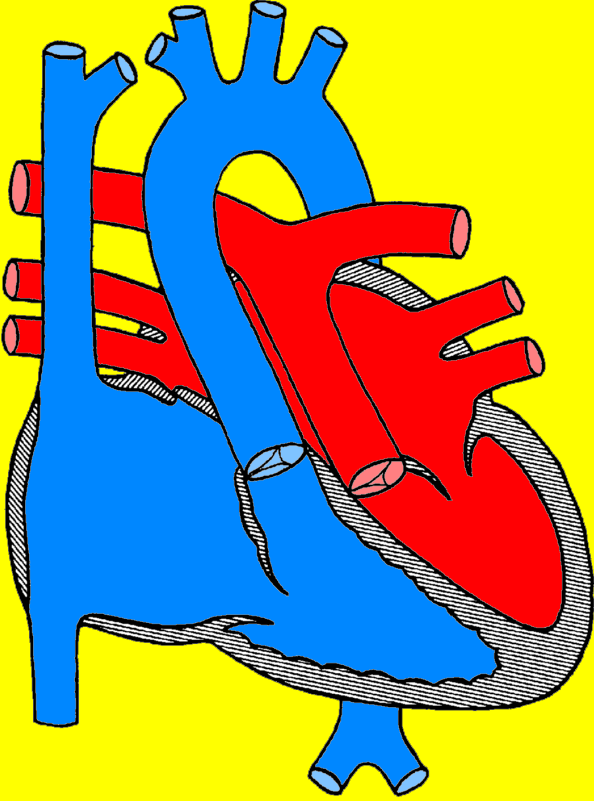
**#PedsCards  
Against  
Humanity.**

**#PedsCards  
Against  
Humanity.**

**#PedsCards  
Against  
Humanity.**

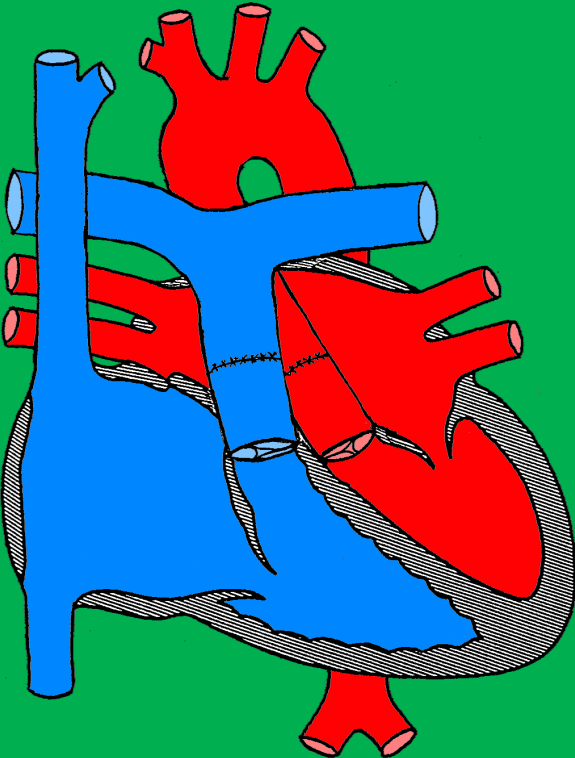
**#PedsCards  
Against  
Humanity.**

21



# Transposition of the great arteries

22



# Arterial switch operation

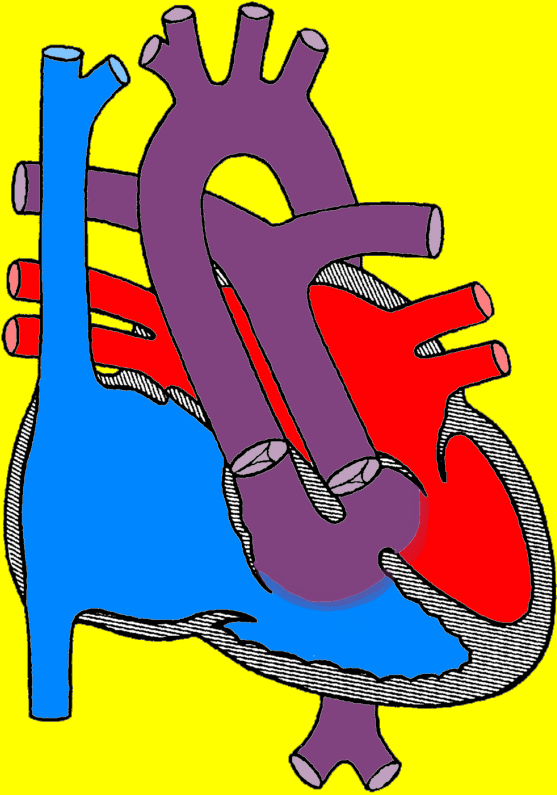
**#PedsCards  
Against  
Humanity.**

**#PedsCards  
Against  
Humanity.**

**#PedsCards  
Against  
Humanity.**

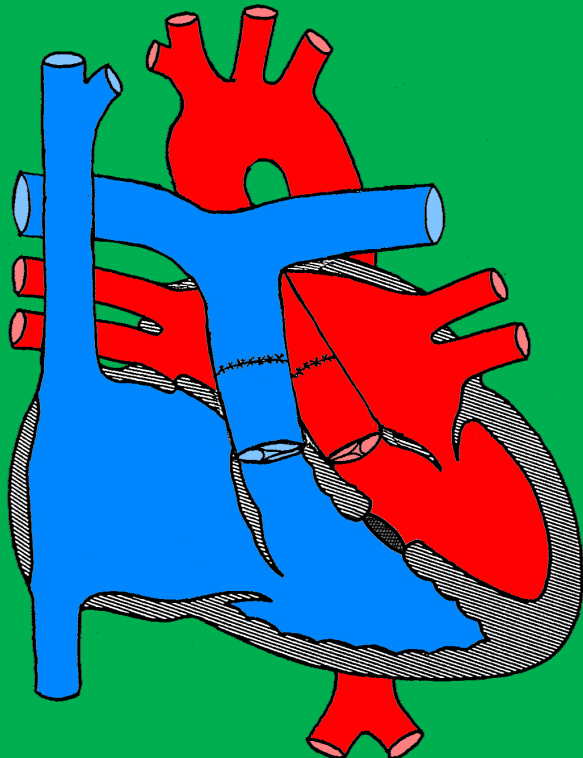
**#PedsCards  
Against  
Humanity.**

22



**Transposition  
of the great  
arteries,  
ventricular  
septal defect**

23



**Arterial  
switch  
operation,  
patch  
closure**

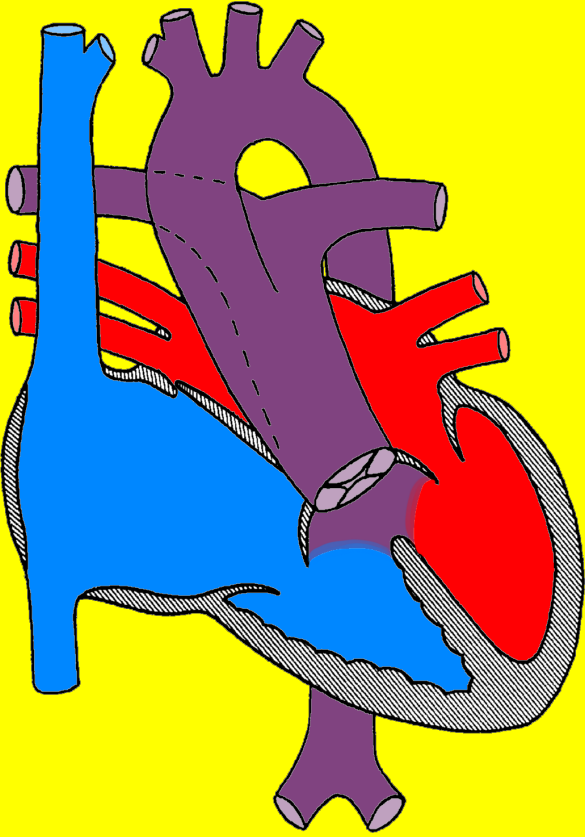
**#PedsCards  
Against  
Humanity.**

**#PedsCards  
Against  
Humanity.**

**#PedsCards  
Against  
Humanity.**

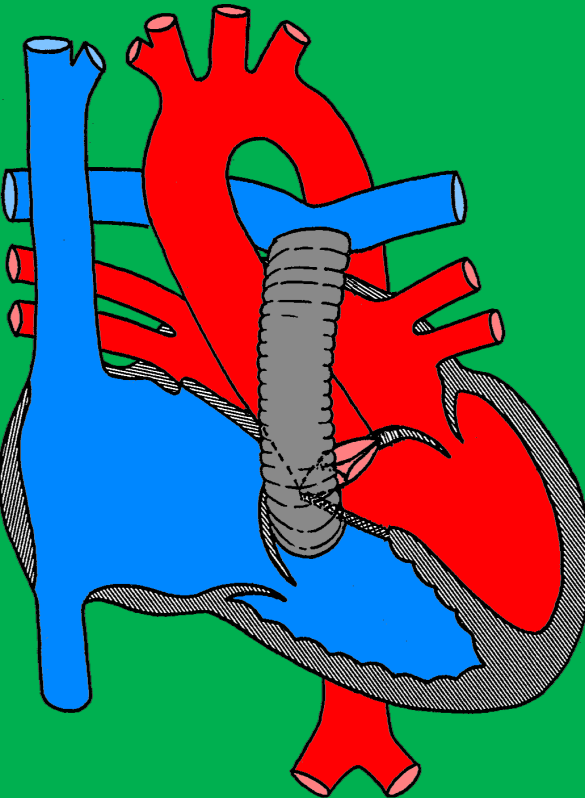
**#PedsCards  
Against  
Humanity.**

24



# Truncus arteriosus type 1

24



# Patch closure, right ventricle to pulmonary artery conduit (Rastelli)

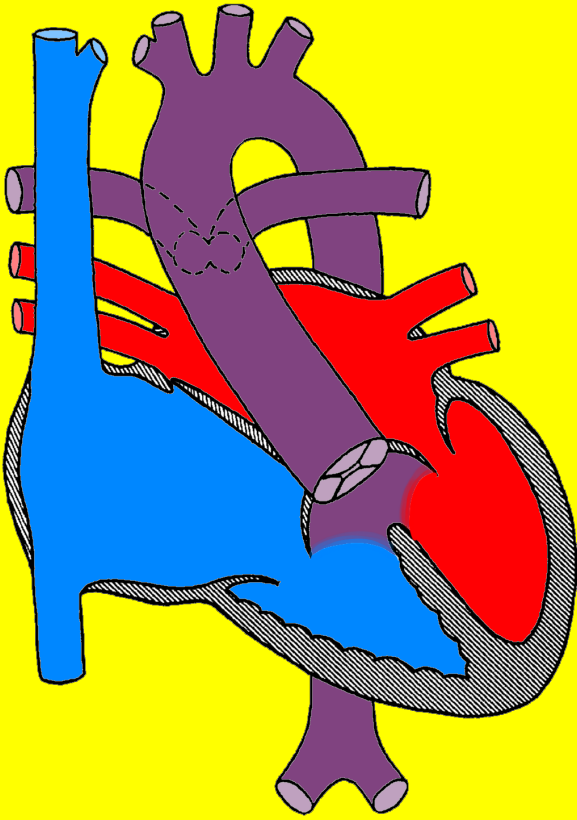
**#PedsCards  
Against  
Humanity.**

**#PedsCards  
Against  
Humanity.**

**#PedsCards  
Against  
Humanity.**

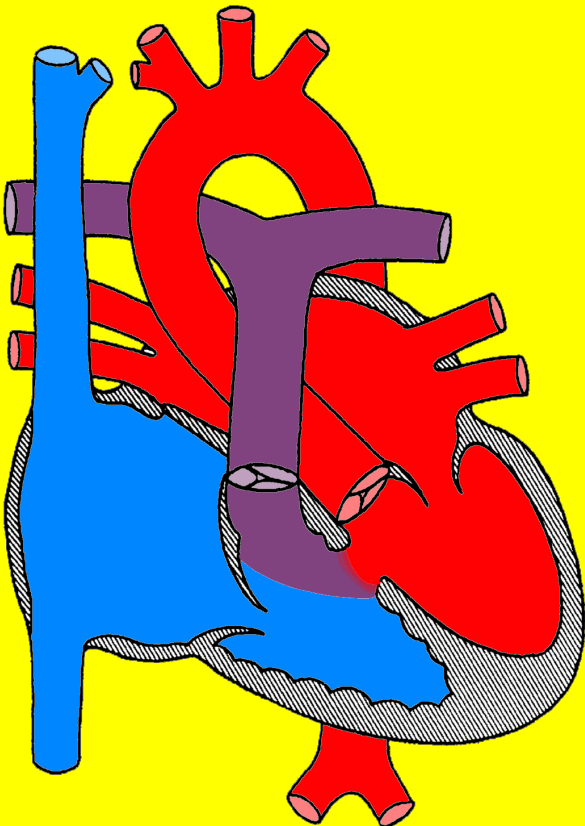
**#PedsCards  
Against  
Humanity.**

25



**Truncus  
arteriosus  
type 2**

26



**Ventricular  
septal  
defect**

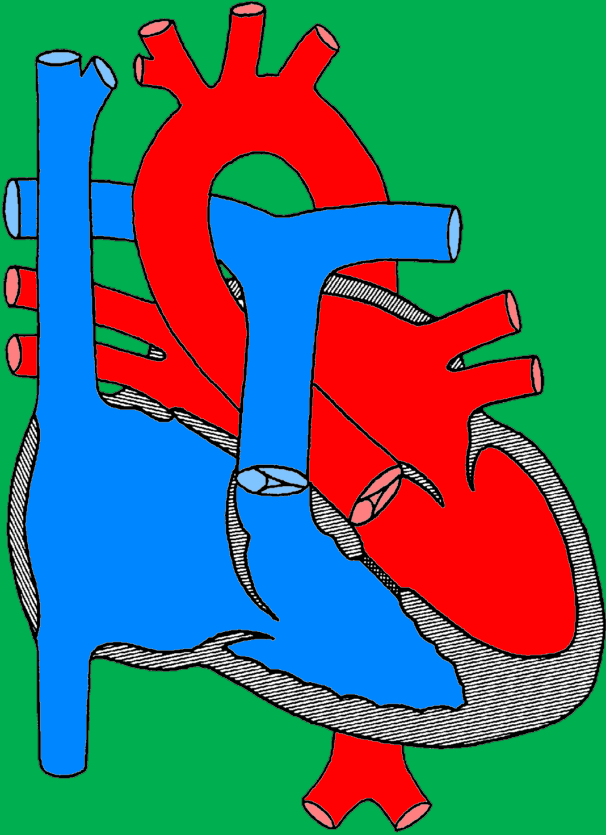
**#PedsCards  
Against  
Humanity.**

**#PedsCards  
Against  
Humanity.**

**#PedsCards  
Against  
Humanity.**

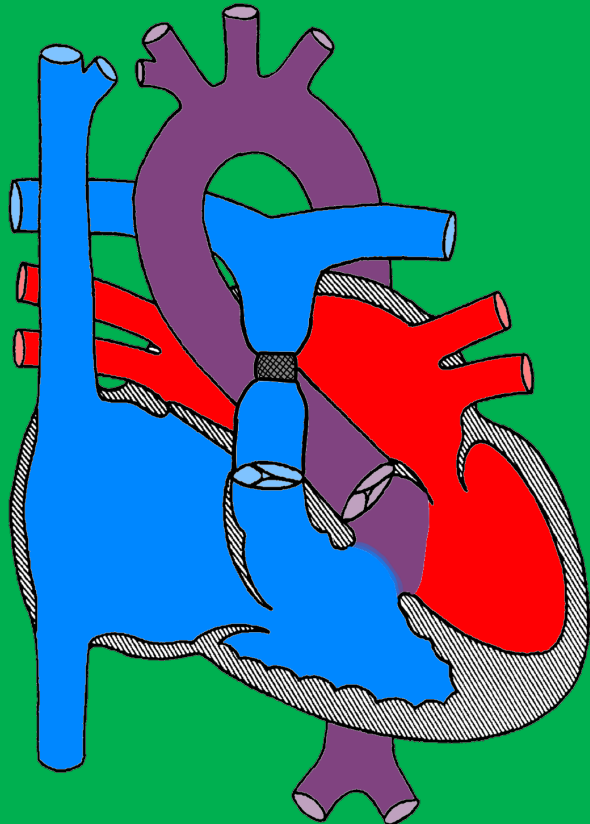
**#PedsCards  
Against  
Humanity.**

25



Patch  
closure

26



Pulmonary  
artery  
banding

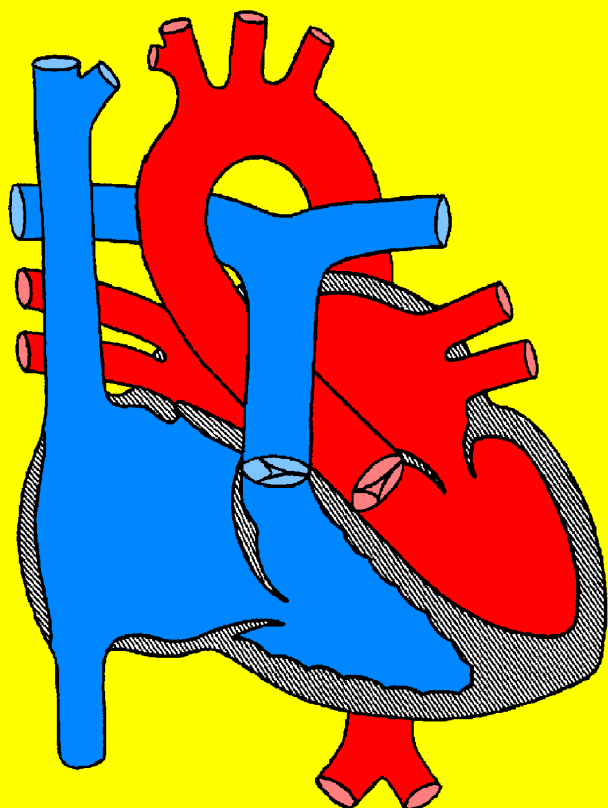
**#PedsCards  
Against  
Humanity.**

**#PedsCards  
Against  
Humanity.**

**#PedsCards  
Against  
Humanity.**

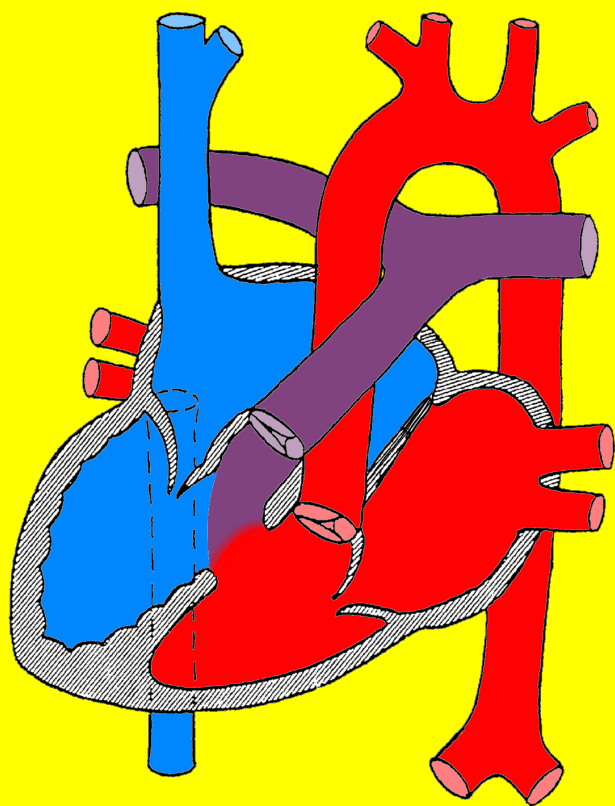
**#PedsCards  
Against  
Humanity.**

27



Normal  
heart

28



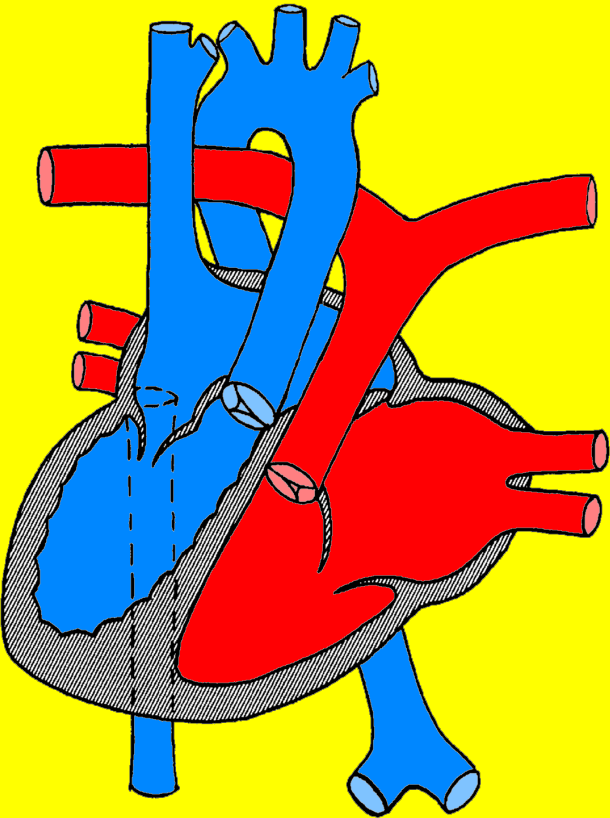
**#PedsCards  
Against  
Humanity.**

**#PedsCards  
Against  
Humanity.**

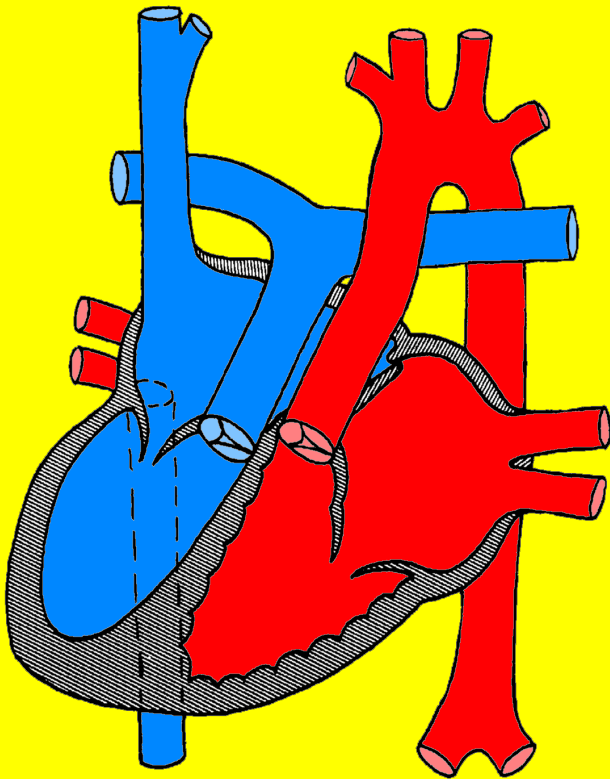
**#PedsCards  
Against  
Humanity.**

**#PedsCards  
Against  
Humanity.**

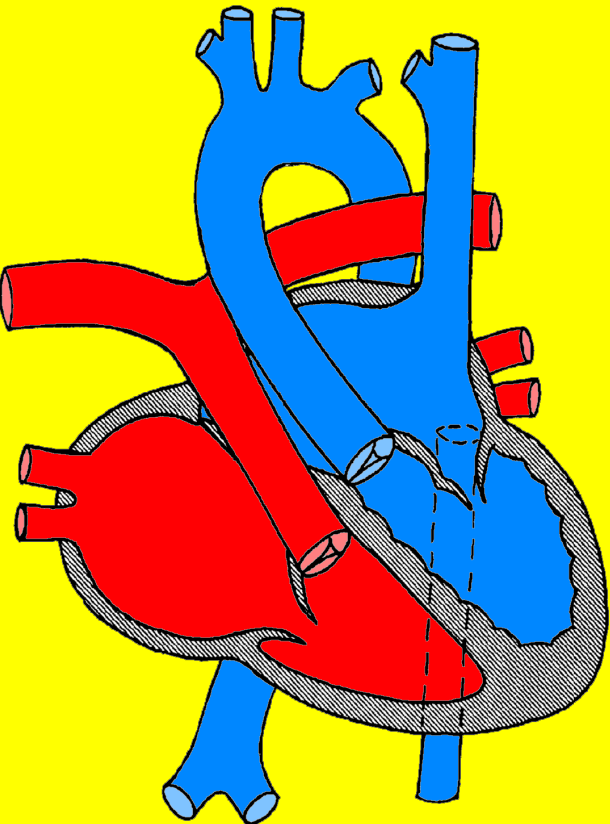
29



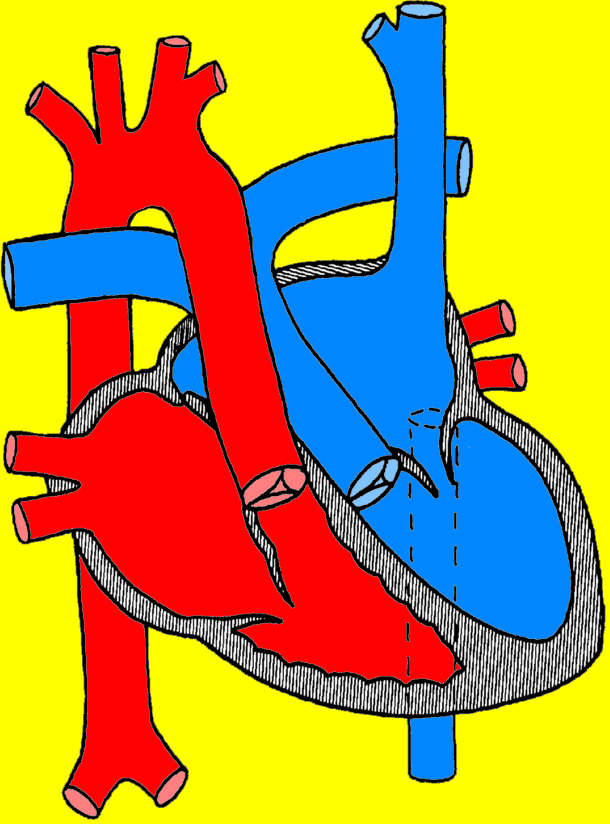
30



31



32



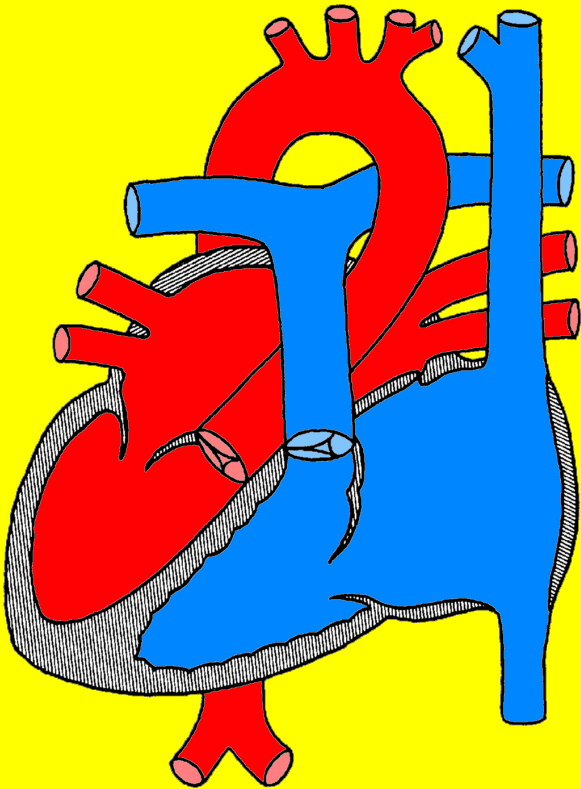
**#PedsCards  
Against  
Humanity.**

**#PedsCards  
Against  
Humanity.**

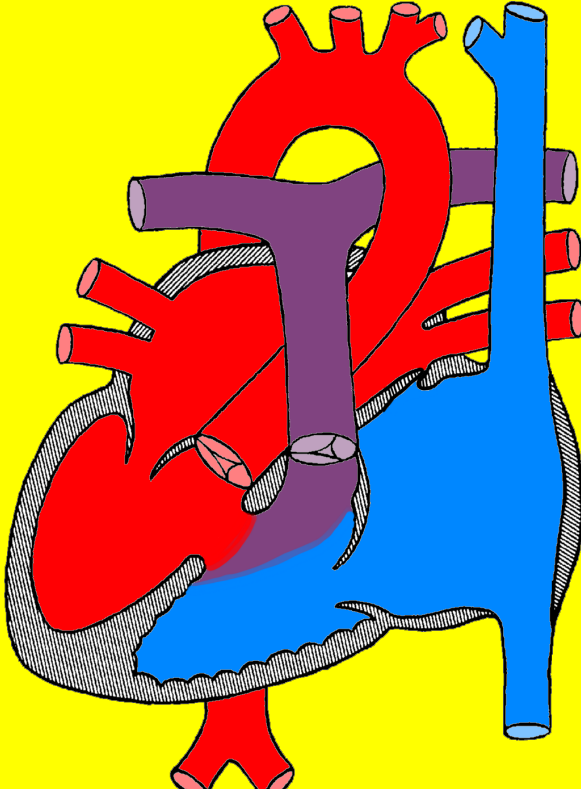
**#PedsCards  
Against  
Humanity.**

**#PedsCards  
Against  
Humanity.**

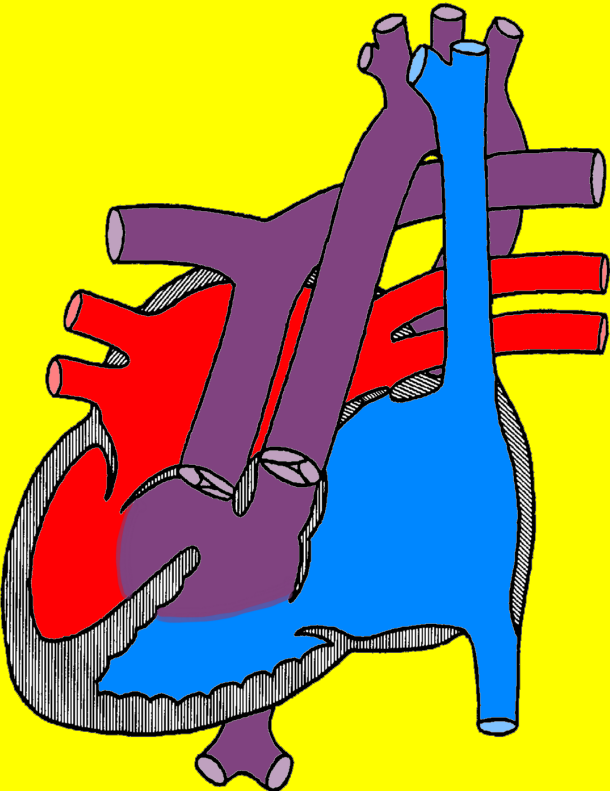
33



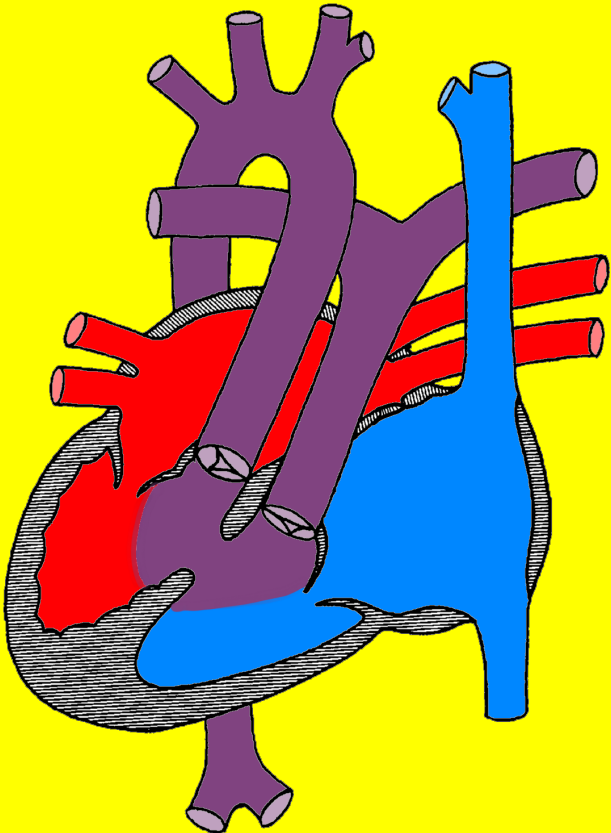
34



35



36



**#PedsCards  
Against  
Humanity.**

**#PedsCards  
Against  
Humanity.**

**#PedsCards  
Against  
Humanity.**

**#PedsCards  
Against  
Humanity.**

**Situs  
inversus**

**Situs  
inversus**

**Dextrocardia**

**Dextrocardia**